

_Safety notices

■ Before the first use of this equipment, read the safety warnings and follow them accordingly. Save these safety warnings for reference or the next owner.

■ Read the instruction manual carefully and pay special attention to the safety warnings before putting the equipment in operation.

■ Warning and alert labels on the equipment provide important notices for safe operation.

■ In addition to the indications in the instruction manual, the current general safety and accident prevention regulations must be observed.

Scope of supply

■ Check the completeness of the delivery during unpacking. Contact your dealer if accessories are missing or in case of transport damages. The wheels are in the packaging and have to be assembled.

■ Keep plastic packaging out of the reach of children, risk of suffocation!

Intended use

WARNING

This appliance is not suitable for vacuuming dust that is harmful to health.

■ This appliance is intended for use as a dry, wet or wet vacuum cleaner, in accordance with the descriptions and safety instructions found in this

instruction manual.

■ This appliance is suitable for use in commercial and industrial applications such as hotels, workshops and schools, hospitals, factories, stores, offices, shopping malls and rental businesses.

Electrical power connection

■ The mains voltage must correspond to the voltage indicated on the machine label.

Minimum socket protection: (see technical data).

■ Protective class I devices may only be connected to grounded power sources.

■ This equipment must only be plugged to an electrical connection made by a qualified electrician, according to IEC 60364-1.

■ It is recommended to use a residual current device (differential residual current circuit breaker – DR) that interrupts the power supply if the earth leakage current exceeds 30 mA for 30 ms, or a device against grounding circuit faults.

■ The cable recommended by the manufacturer must be used; this also applies to any replacements.

■ Before any use of the equipment, check that the cable and plug are not damaged in any way. Any damaged connection cables must be replaced immediately by our Authorized Service Centers or by an authorized technician to avoid hazard risks.

■ The connection procedure may cause brief voltage drops. Under unfavorable conditions of the power grid, this effect may harm other devices.

■ If the mains impedance is less than 0.15 Ohm, it is unlikely that problems will occur.

■ Never use wet hands to handle electrical components such as cables, switches, plugs, extensions etc.

■ Always ensure that cables and extensions are not damaged by running over them, crushing, pulling or similar problems. Protect them against heat, oil, sharp edges, and sharp or pointed objects.

■ If you must use extensions, make sure that the cables have the appropriate gauge: 1.5 mm² for cables 1-10 meters of length, and 2.5 mm² for cables 10-30 meters long.

■ The plugs and couplings of the electrical extension must be waterproof.

ATTENTION: Improper electrical extension cords can be dangerous. If extension cables have to be used, they must be suitable for external use, and the connections must be kept dry and out of contact with water. It is recommended that the extension and its plugs remain at a minimum distance of 60 mm from the ground. Extension cords must be fully unwound during use.

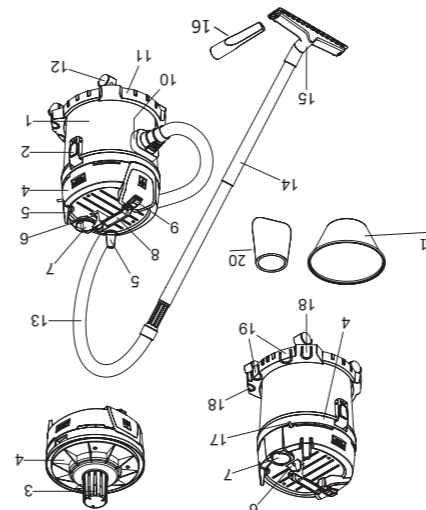
■ Regularly check the cables for cracks or aging. Should any damages be detected, replace the cable before using the device again.

■ When replacing couplings on electrical extensions, their protection against water and their mechanical stability must not be impaired.

■ The device must not be cleaned with a water/garden hose or high-pressure water jet (risk of short circuit or other damages).

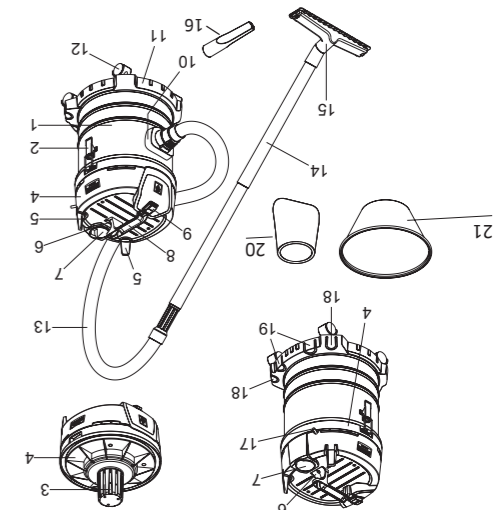
WARNING: Always turn off the switch when leaving the machine unattended.

- 1- 15 L plastic dirt container
2- Container closure
3- Mechanical anti-spill guard (float)
4- Suction head
5- Cable hook/elbow socket
6- Hose storage
7- Blow connection
8- Carrying handle
9- Main Switch (ON / OFF)
10- Suction connection
11- Bumper (*)
12- Steering wheels
13- Suction hose with straight tube
14- Suction tube
15- Floor nozzle
16- Crevice nozzle
17- Electric cable with plug
18- Holder (narrow)
19- Holder (wide)
20- Foam filter
21- Cloth filter
*not applicable to models: NT 15/1 Basic, NT 15/1 Black Edition, NT 15/1 Car, NT 15/1 Deluxe, NT 15/1 Plus, NT 15/1 Premium



Device elements (plastic container)

- 1- 20 L or 30 L steel dirt container
2- Container closure
3- Mechanical anti-spill guard (float)
4- Suction head
5- Cable hook/elbow socket
6- Hose storage
7- Blow connection
8- Carrying handle
9- Main Switch (ON / OFF)
10- Suction connection
11- Bumper (*)
12- Steering wheels
13- Suction hose with straight tube
14- Suction tube
15- Floor nozzle
16- Crevice nozzle
17- Electric cable with plug
18- Holder (narrow)
19- Holder (wide)
20- Foam filter
21- Cloth filter
*not applicable to models: NT 15/1 Basic, NT 15/1 Black Edition, NT 15/1 Car, NT 15/1 Deluxe, NT 15/1 Plus, NT 15/1 Premium



Device elements (steel container)

Dry vacuuming

WARNING:

This appliance is not suitable for vacuuming dust that is harmful to health.

■ When vacuuming fine dust, the paper filter (optional) must also be used.

Wet vacuuming

DANGER!

■ The mechanical anti-spill guard (float) should be cleaned regularly and examined for signs of damage.

■ If foaming or liquid spills occur, unplug the equipment immediately.

■ Unless otherwise indicated by the device's instruction manual, only liquids up to a temperature of 45 °C may be absorbed.

■ The cloth filter or the paper filter must be removed before vacuuming liquid dirt.

■ This device is only suitable if expressly equipped for the absorption of refrigerants and lubricants.

Environmental Protection

The packaging materials are recyclable and recoverable. Please dispose of the packaging in a way that does not harm the environment.

Old devices contain valuable recyclable materials that must be handed over for later reuse. Please dispose of used devices so as to protect the environment. Electrical and electronic equipment often contain components that can pose potential hazards to human health and the environment if they are handled or disposed of incorrectly. These components are necessary for the correct operation of the equipment. Equipment marked with this symbol must not be disposed of with household waste.

Indications on ingredients (REACH)

You will find current information on ingredients here:

www.kaercher.com/REACH

_Warranty

The warranty conditions established by our distribution company are applicable in all countries. Device faults will be repaired free of charge within the warranty period, provided they are due to material or manufacturing defects. In a warranty case, please contact the dealer where you purchased the machine or your nearest authorized customer service center with proof of purchase. The addresses can be found here:



www.kaercher.com/dealersearch

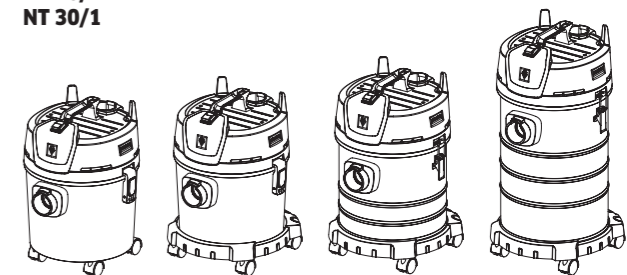


MADE IN BRAZIL BY
KÄRCHER INDÚSTRIA E COMÉRCIO LTDA.
VIA MIGUEL MELHADO CAMPOS, 600
VINHEDO - SP - BRAZIL - ZIP CODE 13.288-003
www.kaercher.com

KÄRCHER

KÄRCHER

NT 15/1
NT 15/1 Basic
NT 15/1 Black Edition
NT 15/1 Car
NT 15/1 Deluxe
NT 15/1 Plus
NT 15/1 Premium
NT 20/1
NT 30/1



General instructions



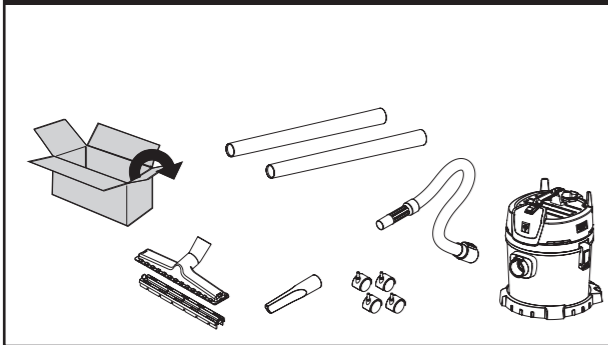
9.356-420.0 / Rev. 0

Read the original instruction manual before using your equipment. Proceed according to the instructions in the manual and keep it for later reference or for third parties to whom you can sell the equipment.

STEP BY STEP TO START THE DEVICE

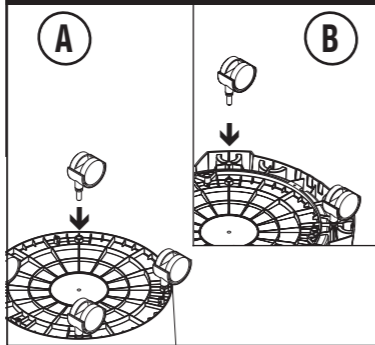
The assembly method is the same for all models in this manual. Images for illustrative purposes only.

STEP 1 - OPENING THE PACKAGING



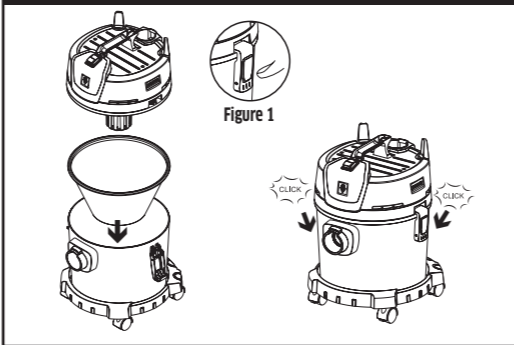
Unpack the appliance and accessories from the box.

STEP 2 - MOUNTING THE WHEELS



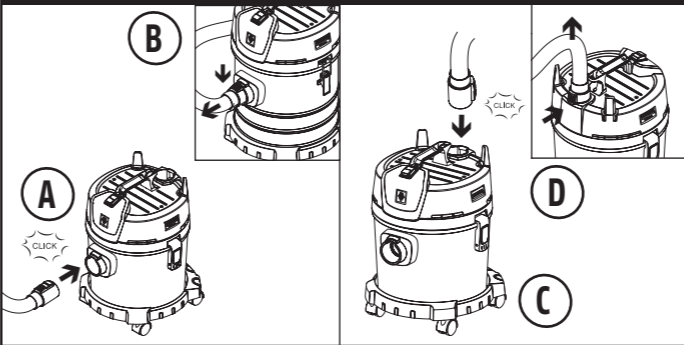
* Versions NT 15/1 Basic, NT 15/1 Black Edition, NT 15/1 Car, NT 15/1 Deluxe, NT 15/1 Plus, NT 15/1 Premium: Fit the wheels to the bottom of the tank - see image A.
** Other versions - Fit the wheels to the lower part of the bumper - see image B.

STEP 3 - INSTALLING THE FILTER AND VACUUM HEAD



Unlock and remove the suction head. Place the washable filter in the dirt collector container, making sure its edge is duly sealed.
ATTENTION! To lock and unlock the suction head, place your finger on the container lock position as shown in Figure 1.

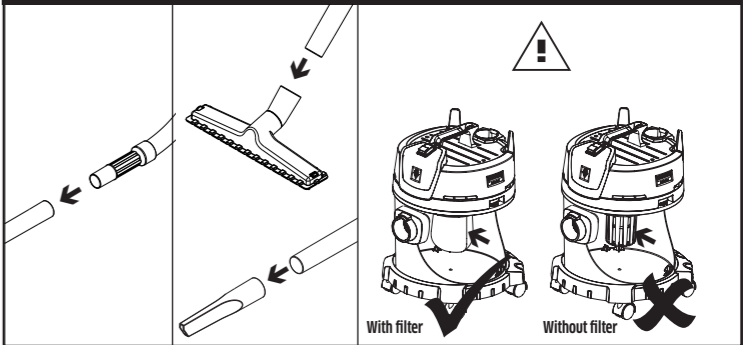
STEP 4 - CONNECTING THE VACUUM / BLOW HOSE



To use the vacuum function, fit the hose connector to the vacuum connection until you hear a "click" - see image A. To disconnect the hose from the suction connection, press the release button and then pull the hose - see image B.

To use the blower function, fit the hose connector to the blower connection until you hear a "click". See image C. To disconnect the hose from the blow connection, press the release button and then pull the hose - see image D.

STEP 5 - ASSEMBLING THE ACCESSORIES

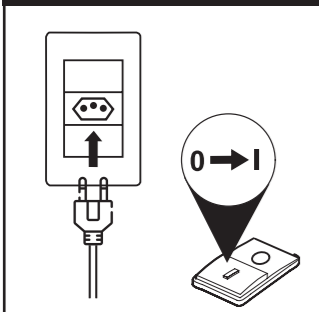


Connect the handle to the suction hose until it clicks.

Connect the suction hose to the floor nozzle or crevice nozzle until it clicks.

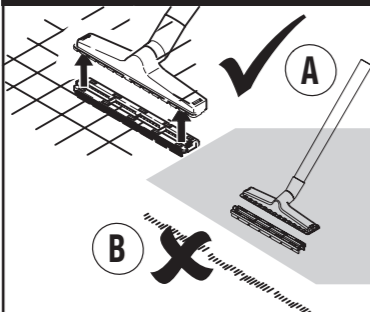
Never use the appliance without the foam filter installed.

STEP 6 - SWITCHING ON THE DEVICE



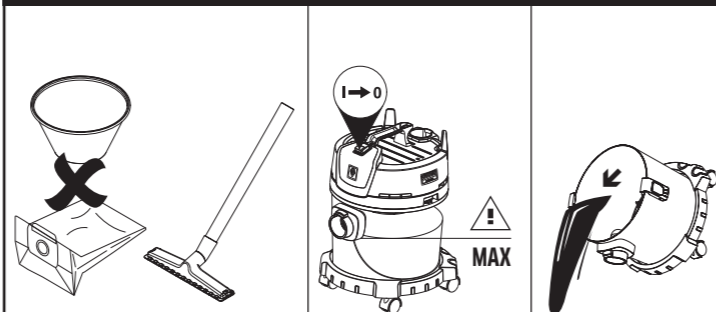
Connect the plug to a mains socket and press the ON switch (Position I).

STEP 7 - DUST VACUUMING



a) To vacuum hard floors with dry dirt, fit the brush to the floor nozzle.
b) To vacuum dry dirt on carpets DO NOT fit the brush to the floor nozzle.

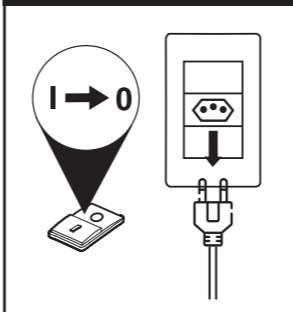
STEP 8 - LIQUID VACUUMING



For liquids, do not use paper or cloth filter. If foaming or liquid spills occur, unplug the equipment immediately.

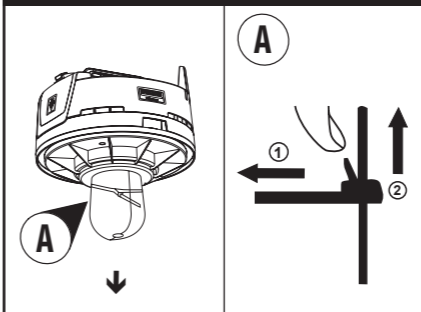
When the tank is full, the mechanical overflow protection (float) closes the suction opening and the turbine rotates at a higher speed. In this case, turn off the appliance and empty the tank. After finishing the suction of liquids: Clean the mechanical anti-spill guard grid (float) and the container with a damp cloth. Use a dry cloth to dry.

STEP 9 - AFTER THE OPERATION



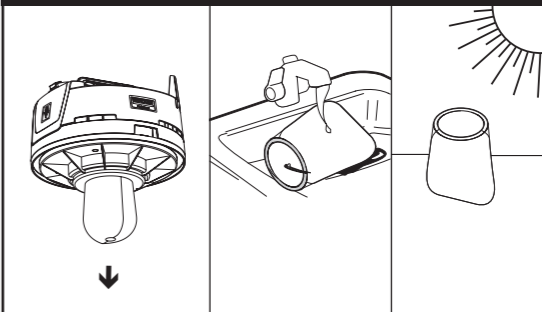
When done, press the OFF switch (Position O) and remove the plug from the mains.

STEP 10 - CLEANING THE FOAM FILTER



To release the clamp, hold the clamp head, pull the release tab in the direction indicated in A.1, and move the lock in the direction of clamp release (A.2).

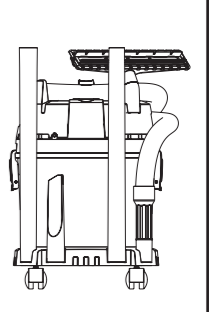
STEP 11 - CLEANING THE FOAM FILTER



Remove the foam filter by pulling it as shown in the figure.

Wash the filter in cold, running water and let it dry completely in open air.

STEP 12 - ACCESSORIES



Accessory storage. Store the electric cable and accessories with the device. Store the device in a dry place.

Handling

- The user must use the device according to the specifications. Observe the local conditions and pay attention to third parties, and especially children, when operating the device.
- Always turn off the machine at the main switch when leaving it unattended. Never leave the equipment unattended while turned on.
- The device must only be handled by persons who have been specially instructed to do so or by persons who have demonstrated ability to handle the device and who are expressly authorized to use it.
- This device should not be used by children or persons with reduced physical, sensory or mental capabilities, or lack of experience and knowledge, unless they have been properly trained or supervised.
- ATTENTION:** This device must not be handled by children or untrained persons.
- ATTENTION:** Do not use the device if other people are in its range of action, unless they wear protective equipment.
- Children must be supervised to ensure that they do not play with the device.
- Always work on the equipment using appropriate gloves.
- The blowing function is not intended to blow off deposited dust.

DANGER!

- Before using the equipment with its work devices, especially the connection cable and the extension cable, check that they are in perfect condition and that they can ensure safety during service. If they are not in perfect conditions, unplug them immediately. The device cannot be used.
 - Do not vacuum incandescent objects, with or without flame.
 - People and animals must not be vacuumed with this device.
 - The appliance cannot be used outdoors under low temperatures.
 - Certain substances can mix with the aspirated air due to turbulence, giving rise to explosive mixtures or vapors.
 - Never vacuum the following substances:
 - Explosive or flammable gases, liquids and powders (reactive powders).
 - Reactive metal powders (e.g. aluminum, magnesium, zinc) in combination with highly alkaline and acid detergents.
 - Undiluted strong acids and alkalis.
 - Organic solvents (e.g. gasoline, color thinners, acetone, fuel oil).
- In addition, these substances can adversely affect the materials used in the device.

- The device must always be placed on a flat and stable base.
- Hearing protection equipment is required if a sound pressure level greater than 85 dB(A) is specified in the operating instructions for the device (technical data).
- All electrical components in the reach area of the equipment must be protected against water jets.

Care and maintenance

Maintenance

- Before cleaning and maintaining the device or changing any parts, the device must be turned off and the plug must be removed from the socket, for electrically powered devices; or for devices with combustion engines provided with electric ignition, the ignition key must be removed and the battery disconnected.
- Repairs can only be carried out by our Authorized Service Centers or by Kärcher technicians, who are familiar with the main safety regulations.

Accessories and Spare Parts

- Only use original accessories and spare parts. Thus, you can ensure safe and trouble-free operation of the device.
- To avoid risks, repairs and assembly of spare parts can only be carried out by the Authorized Service Center.

ATTENTION: To ensure equipment safety, use only replacement parts recommended or approved by Kärcher.

- Original accessories and spare parts provide the guarantee of safe and fault-free operation of the device.

Transport

- During transport, the device must be immobilized and securely fixed.

Storage

- Wet filters and the inside of the liquid container must be dried before storage.
 - The device must be protected against low temperatures.
- WARNING:**
This machine should be stored indoors only.

Technical Data

Electrical Connection		NT 15/1 Basic, NT 15/1 Black Edition, NT 15/1 Car, NT 15/1 Deluxe, NT 15/1 Plus, NT 15/1 Premium		NT 15/1		NT 20/1		NT 30/1	
		110-127	220-230	110-127	220-230	110-127	220-230	110-127	220-230
Voltage	V	110-127	220-230	110-127	220-230	110-127	220-230	110-127	220-230
Frequency	Hz	1~50-60	1~50-60	1~50-60	1~50-60	1~50-60	1~50-60	1~50-60	1~50-60
Protective class		II	II	II	II	II	II	II	II
Protection class	--	IPX4	IPX4	IPX4	IPX4	IPX4	IPX4	IPX4	IPX4
Mains fuse (slow-blow)	A	10	10	10	10	10	10	10	10
Power-Related Data									
Power (max.)	W	1400	1400	1400	1400	1400	1400	1400	1400
Air flow (max.)	L/s	31	31	31	31	31	31	31	31
Depression (max)	kPa (mbar)	17 (170)	17 (170)	17 (170)	17 (170)	17 (170)	17 (170)	17 (170)	17 (170)
Noise L _{pa}	dB(A)	91	91	91	91	91	91	91	91
Hand-arm vibration a _h	m/s ²	≤ 2.5	≤ 2.5	≤ 2.5	≤ 2.5	≤ 2.5	≤ 2.5	≤ 2.5	≤ 2.5
Overpressure (blow function)	kPa (mbar)	3 (30)	3 (30)	3 (30)	3 (30)	3 (30)	3 (30)	3 (30)	3 (30)
Data Related to the Container and Suction Tube Connection									
Total container capacity	L	15	15	15	15	20	20	30	30
Effective container capacity (powder/liquid)	L	9	9	9	9	12	12	22	22
Suction tube connection	mm	35	35	35	35	35	35	35	35
Dimensions and Weights									
Length	mm	354	354	373	373	368	368	368	368
Width	mm	342	342	342	342	330	330	330	330
Height	mm	457	457	468	468	521	521	666	666
Weight	kg	4.9	4.9	5.7	5.7	6.1	6.1	6.6	6.6

Subject to technical modifications